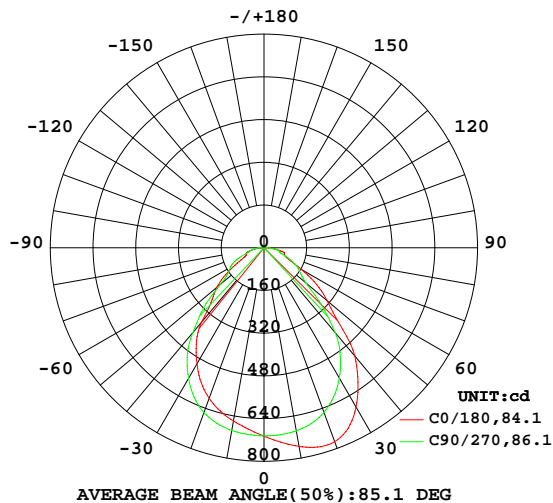


## LUMINAIRE PHOTOMETRIC TEST REPORT

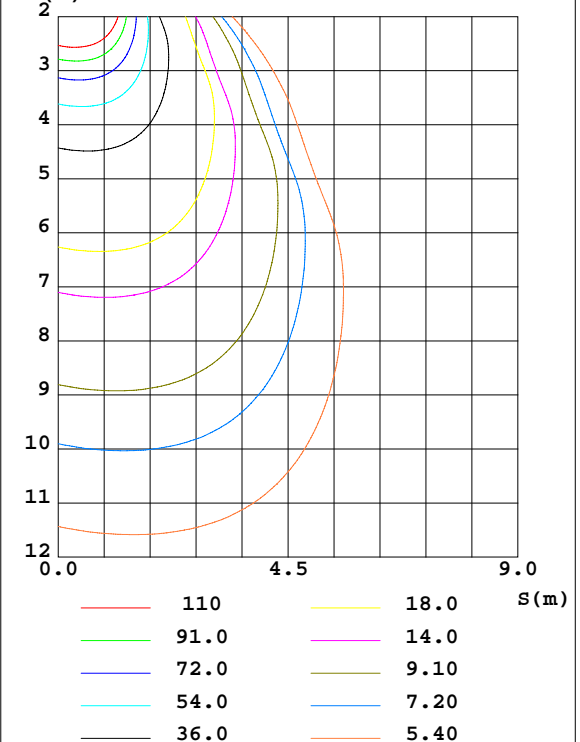
Test:U:229.79V I:0.1300A P:28.361W PF:0.9496 Freq:49.99Hz Lamp Flux:1496.29x1 lm		
NAME:	TYPE:	WEIGHT:
SPEC.:	DIM.: 600*203*10	SERIAL No.:
MFR.:	SUR.:0.58*0.122	Shielding Angle:

DATA OF LAMP		PHOTOMETRIC DATA Eff: 52.76 lm/W			
MODEL		Imax(cd)	775.9	S/MH(C0/180)	1.09
NOMINAL POWER(W)	30	LOR(%)	100.0	S/MH(C90/270)	1.19
RATED VOLTAGE(V)	230.0	TOTAL FLUX(lm)	1496.3	$\eta$ UP,DN(C0-180)	0.0,53.6
NOMINAL FLUX(lm)	1496.29	CIE CLASS	DIRECT	$\eta$ UP,DN(C180-360)	0.0,46.4
LAMPS INSIDE	1	$\eta$ up(%)	0.0	CIBSE SHR NOM	1.25
TEST VOLTAGE(V)	230.0	$\eta$ down(%)	100.0	CIBSE SHR MAX	1.25

LUMINOUS INTENSITY DISTRIBUTION DIAGRAM



C0 PLANE ISOLUX DIAGRAM (UNIT:lx)



C Range: 0 - 360DEG  
C Interval: 90.0DEG  
Test Speed: HIGH  
Temperature:25.3DEG  
Operators:  
Test Date:2026-01-17

$\gamma$  Range: 0 - 90DEG  
 $\gamma$  Interval: 1.0DEG  
Test System:EVERFINE GO-2000A\_V1 SYSTEM V2.0.406.10  
Humidity:65.0%  
Test Distance:11.700m [K=1.0000]  
Remarks:

## ZONAL FLUX DIAGRAM

## ZONAL FLUX DIAGRAM:

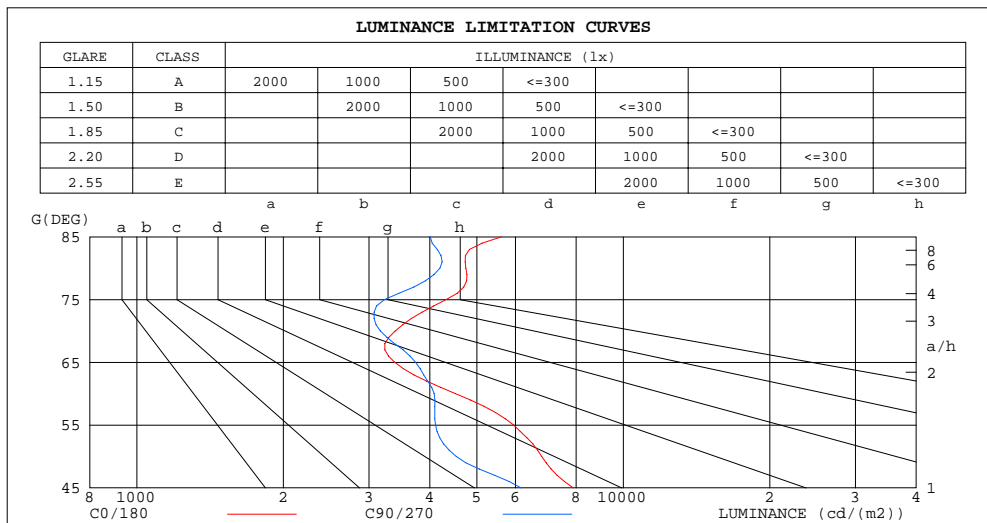
$\gamma$	C0	C90	C180	C270					$\gamma$	$\Phi$ zone	$\Phi$ total	$\Phi$ lum, lamp
10	755.6	696.8	659.1	695.0					0- 10	67.15	67.15	4.49,4.49
20	773.4	656.3	600.3	657.2					10- 20	195.3	262.4	17.5,17.5
30	689.8	564.1	501.7	565.1					20- 30	291.0	553.4	37,37
40	528.8	415.8	363.9	414.3					30- 40	319.6	873.0	58.3,58.3
50	309.0	206.2	230.1	211.4					40- 50	252.0	1125	75.2,75.2
60	159.9	144.5	115.9	144.3					50- 60	167.6	1293	86.4,86.4
70	82.21	76.63	70.49	84.20					60- 70	104.2	1397	93.4,93.4
80	58.32	51.56	43.10	49.00					70- 80	68.85	1466	98,98
90	10.91	4.570	1.400	6.546					80- 90	30.63	1496	100,100
100									90-100			
110									100-110			
120									110-120			
130									120-130			
140									130-140			
150									140-150			
160									150-160			
170									160-170			
180									170-180			
DEG	LUMINOUS INTENSITY:cd									UNIT:lm		

C Range: 0 - 360DEG  
C Interval: 90.0DEG  
Test Speed: HIGH  
Temperature:25.3DEG  
Operators:  
Test Date:2026-01-17

$\gamma$  Range: 0 - 90DEG  
 $\gamma$  Interval: 1.0DEG  
Test System:EVERFINE GO-2000A\_V1 SYSTEM V2.0.406.10  
Humidity:65.0%  
Test Distance:11.700m [K=1.0000]  
Remarks:

## LUMINANCE LIMITATION CURVES

Test:U:229.79V I:0.1300A P:28.361W PF:0.9496 Freq:49.99Hz Lamp Flux:1496.29x1 lm		
NAME:	TYPE:	WEIGHT:
SPEC.:	DIM.: 600*203*10	SERIAL No.:
MFR.:	SUR.:0.58*0.122	Shielding Angle:



LUMINANCE cd/(m2)		
G(DEG)	C0/180	C90/270
85	5615	4011
80	4746	4196
75	4324	3228
70	3397	3166
65	3390	3740
60	4521	4085
55	5950	4111
50	6793	4534
45	7897	6165

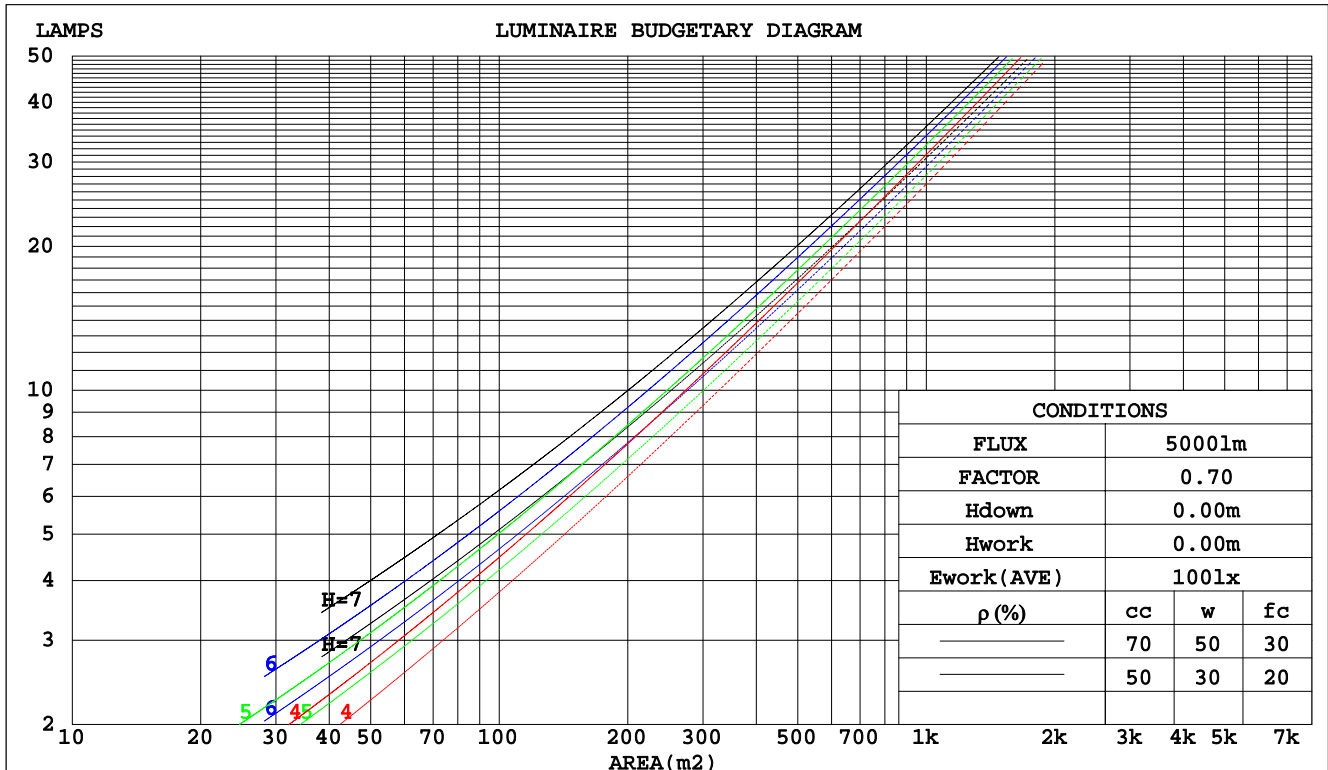
C Range: 0 - 360DEG  
C Interval: 90.0DEG  
Test Speed: HIGH  
Temperature:25.3DEG  
Operators:  
Test Date:2026-01-17

$\gamma$  Range: 0 - 90DEG  
 $\gamma$  Interval: 1.0DEG  
Test System:EVERFINE GO-2000A\_V1 SYSTEM V2.0.406.10  
Humidity:65.0%  
Test Distance:11.700m [K=1.0000]  
Remarks:

## CU AND LUMINAIRE BUDGETARY ESTIMATE DIAGRAM

Test:U:229.79V I:0.1300A P:28.361W PF:0.9496 Freq:49.99Hz Lamp Flux:1496.29x1 lm		
NAME:	TYPE:	WEIGHT:
SPEC.:	DIM.: 600*203*10	SERIAL No.:
MFR.:	SUR.:0.58*0.122	Shielding Angle:

pcc	80%			70%			50%			30%			10%			0
pw	50%	30%	10%	50%	30%	10%	50%	30%	10%	50%	30%	10%	50%	30%	10%	0
pfc	20%			20%			20%			20%			20%			0
RCR	RCR:Room Cavity Ratio			Coefficients of Utilization(CU)												
0.0	1.19	1.19	1.19	1.16	1.16	1.16	1.11	1.11	1.11	1.06	1.06	1.06	1.02	1.02	1.02	.00
1.0	1.06	1.02	.98	1.03	.00	.97	.99	.96	.94	.95	.93	.91	.92	.90	.88	.86
2.0	.94	.88	.83	.92	.87	.82	.89	.84	.80	.85	.82	.78	.83	.79	.76	.74
3.0	.84	.77	.71	.83	.76	.70	.80	.74	.69	.77	.72	.68	.75	.70	.67	.65
4.0	.76	.68	.62	.74	.67	.61	.72	.66	.61	.70	.64	.60	.68	.63	.59	.57
5.0	.69	.60	.54	.68	.60	.54	.65	.59	.54	.64	.58	.53	.62	.57	.52	.51
6.0	.62	.54	.48	.62	.54	.48	.60	.53	.48	.58	.52	.47	.57	.51	.47	.45
7.0	.57	.49	.43	.56	.49	.43	.55	.48	.43	.54	.47	.43	.52	.47	.42	.41
8.0	.53	.45	.39	.52	.44	.39	.51	.44	.39	.49	.43	.39	.48	.43	.39	.37
9.0	.49	.41	.36	.48	.41	.36	.47	.40	.36	.46	.40	.35	.45	.39	.35	.33
10.0	.45	.38	.33	.45	.37	.33	.44	.37	.33	.43	.37	.32	.42	.36	.32	.31



C Range: 0 - 360DEG  
C Interval: 90.0DEG  
Test Speed: HIGH  
Temperature:25.3DEG  
Operators:  
Test Date:2026-01-17

γ Range: 0 - 90DEG  
γ Interval: 1.0DEG  
Test System:EVERFINE GO-2000A\_V1 SYSTEM V2.0.406.10  
Humidity:65.0%  
Test Distance:11.700m [K=1.0000]  
Remarks:

## WEC AND CCEC

Test:U:229.79V I:0.1300A P:28.361W PF:0.9496 Freq:49.99Hz Lamp Flux:1496.29x1 lm								
NAME:			TYPE:			WEIGHT:		
SPEC.:			DIM.: 600*203*10			SERIAL No.:		
MFR.:			SUR.:0.58*0.122			Shielding Angle:		

pcc	80%			70%			50%			30%			10%			0
pw	50%	30%	10%	50%	30%	10%	50%	30%	10%	50%	30%	10%	50%	30%	10%	0
pfc	20%			20%			20%			20%			20%			0
RCR	RCR:Room Cavity Ratio						Wall Exitance Coefficients(WEC)									
0.0																
1.0	.275	.157	.050	.268	.153	.049	.255	.146	.047	.243	.140	.045	.232	.135	.043	
2.0	.258	.141	.043	.252	.139	.043	.240	.134	.041	.230	.129	.040	.220	.124	.039	
3.0	.240	.127	.038	.234	.125	.038	.224	.122	.037	.215	.118	.036	.206	.114	.035	
4.0	.223	.116	.034	.218	.114	.034	.209	.111	.033	.201	.108	.033	.194	.105	.032	
5.0	.208	.106	.031	.204	.105	.030	.196	.102	.030	.189	.100	.030	.182	.097	.029	
6.0	.194	.097	.028	.191	.096	.028	.184	.094	.027	.177	.092	.027	.171	.090	.027	
7.0	.182	.090	.026	.179	.089	.025	.173	.087	.025	.167	.086	.025	.162	.084	.025	
8.0	.171	.084	.024	.168	.083	.023	.163	.081	.023	.158	.080	.023	.153	.078	.023	
9.0	.162	.078	.022	.159	.077	.022	.154	.076	.022	.149	.075	.021	.145	.074	.021	
10.0	.153	.073	.020	.150	.073	.020	.146	.071	.020	.142	.070	.020	.138	.069	.020	

pcc	80%			70%			50%			30%			10%			0
pw	50%	30%	10%	50%	30%	10%	50%	30%	10%	50%	30%	10%	50%	30%	10%	0
pfc	20%			20%			20%			20%			20%			0
RCR	RCR:Room Cavity Ratio						Ceiling Cavity Exitance Coefficients(CCEC)									
0.0	.190	.190	.190	.163	.163	.163	.111	.111	.111	.064	.064	.064	.020	.020	.020	
1.0	.178	.156	.137	.152	.134	.118	.104	.092	.082	.060	.053	.047	.019	.017	.015	
2.0	.168	.132	.102	.144	.114	.088	.098	.079	.062	.057	.046	.036	.018	.015	.012	
3.0	.159	.114	.079	.136	.098	.068	.093	.068	.048	.054	.040	.028	.017	.013	.009	
4.0	.150	.100	.062	.129	.087	.054	.089	.060	.038	.051	.035	.023	.017	.012	.007	
5.0	.143	.090	.051	.123	.078	.044	.084	.054	.031	.049	.032	.018	.016	.010	.006	
6.0	.136	.081	.042	.117	.070	.037	.080	.049	.026	.047	.029	.015	.015	.009	.005	
7.0	.129	.074	.035	.111	.064	.031	.077	.045	.022	.045	.027	.013	.014	.009	.004	
8.0	.123	.068	.031	.106	.059	.027	.073	.042	.019	.043	.024	.011	.014	.008	.004	
9.0	.117	.063	.027	.101	.055	.023	.070	.039	.017	.041	.023	.010	.013	.007	.003	
10.0	.112	.059	.024	.097	.051	.021	.067	.036	.015	.039	.021	.009	.013	.007	.003	

C Range: 0 - 360DEG  
 C Interval: 90.0DEG  
 Test Speed: HIGH  
 Temperature:25.3DEG  
 Operators:  
 Test Date:2026-01-17

γ Range: 0 - 90DEG  
 γ Interval: 1.0DEG  
 Test System:EVERFINE GO-2000A\_V1 SYSTEM V2.0.406.10  
 Humidity:65.0%  
 Test Distance:11.700m [K=1.0000]  
 Remarks:

## UGR(Unified Glare Rating) Table

Test:U:229.79V I:0.1300A P:28.361W PF:0.9496 Freq:49.99Hz Lamp Flux:1496.29x1 lm											
NAME:			TYPE:			WEIGHT:					
SPEC.:			DIM.: 600*203*10			SERIAL No.:					
MFR.:			SUR.:0.58*0.122			Shielding Angle:					
ceiling/cavity	0.7	0.7	0.5	0.5	0.3	0.7	0.7	0.5	0.5	0.3	
walls	0.5	0.3	0.5	0.3	0.3	0.5	0.3	0.5	0.3	0.3	
working plane	0.2	0.2	0.2	0.2	0.2	0.2	0.2	0.2	0.2	0.2	
Room dimensions		Viewed crosswise				Viewed endwise					
x = 2H y = 2H	2H	18.4	19.7	18.6	19.9	20.1	17.5	18.8	17.7	19.0	19.2
	3H	19.0	20.3	19.3	20.5	20.7	18.3	19.6	18.6	19.8	20.1
	4H	19.6	20.8	19.9	21.0	21.3	18.8	20.0	19.1	20.2	20.5
	6H	20.3	21.4	20.6	21.7	21.9	19.4	20.5	19.7	20.8	21.1
	8H	20.5	21.6	20.9	21.9	22.2	19.7	20.8	20.0	21.1	21.3
	12H	20.8	21.8	21.1	22.1	22.4	19.9	20.9	20.2	21.2	21.5
4H	2H	18.6	19.8	18.9	20.0	20.3	17.8	19.0	18.1	19.3	19.5
	3H	19.5	20.5	19.8	20.8	21.1	18.9	20.0	19.3	20.2	20.5
	4H	20.2	21.2	20.6	21.5	21.8	19.5	20.5	19.9	20.8	21.1
	6H	21.2	22.0	21.6	22.4	22.7	20.4	21.3	20.8	21.6	22.0
	8H	21.5	22.3	21.9	22.7	23.0	20.8	21.6	21.2	21.9	22.3
	12H	21.9	22.6	22.3	23.0	23.4	21.0	21.8	21.5	22.1	22.5
8H	4H	20.5	21.3	20.9	21.7	22.0	19.9	20.7	20.3	21.0	21.4
	6H	21.7	22.3	22.1	22.7	23.1	21.0	21.7	21.4	22.1	22.5
	8H	22.1	22.7	22.6	23.1	23.6	21.5	22.1	22.0	22.5	22.9
	12H	22.6	23.1	23.1	23.6	24.0	21.9	22.4	22.3	22.8	23.3
12H	4H	20.6	21.3	21.0	21.7	22.1	20.0	20.7	20.4	21.1	21.5
	6H	21.8	22.3	22.2	22.8	23.2	21.1	21.7	21.6	22.1	22.6
	8H	22.3	22.8	22.8	23.2	23.7	21.7	22.2	22.2	22.6	23.1
Variations with the observer position at spacings:											
S = 1.0H	+ 0.3 / - 0.3					+ 0.4 / - 0.4					
1.5H	+ 0.2 / - 0.4					+ 0.3 / - 0.4					
2.0H	+ 0.5 / - 0.5					+ 0.4 / - 0.3					

CIE Pub.117, 1496 lm Total Lamp Luminous Flux Corrected ( $8\log(F/F_0) = 1.4$ )

C Range: 0 - 360DEG  
C Interval: 90.0DEG  
Test Speed: HIGH  
Temperature:25.3DEG  
Operators:  
Test Date:2026-01-17

$\gamma$  Range: 0 - 90DEG  
 $\gamma$  Interval: 1.0DEG  
Test System:EVERFINE GO-2000A\_V1 SYSTEM V2.0.406.10  
Humidity:65.0%  
Test Distance:11.700m [K=1.0000]  
Remarks:

## UTILIZATION FACTORS TABLE

Test:U:229.79V I:0.1300A P:28.361W PF:0.9496 Freq:49.99Hz Lamp Flux:1496.29x1 lm		
NAME:	TYPE:	WEIGHT:
SPEC.:	DIM.: 600*203*10	SERIAL No.:
MFR.:	SUR.:0.58*0.122	Shielding Angle:

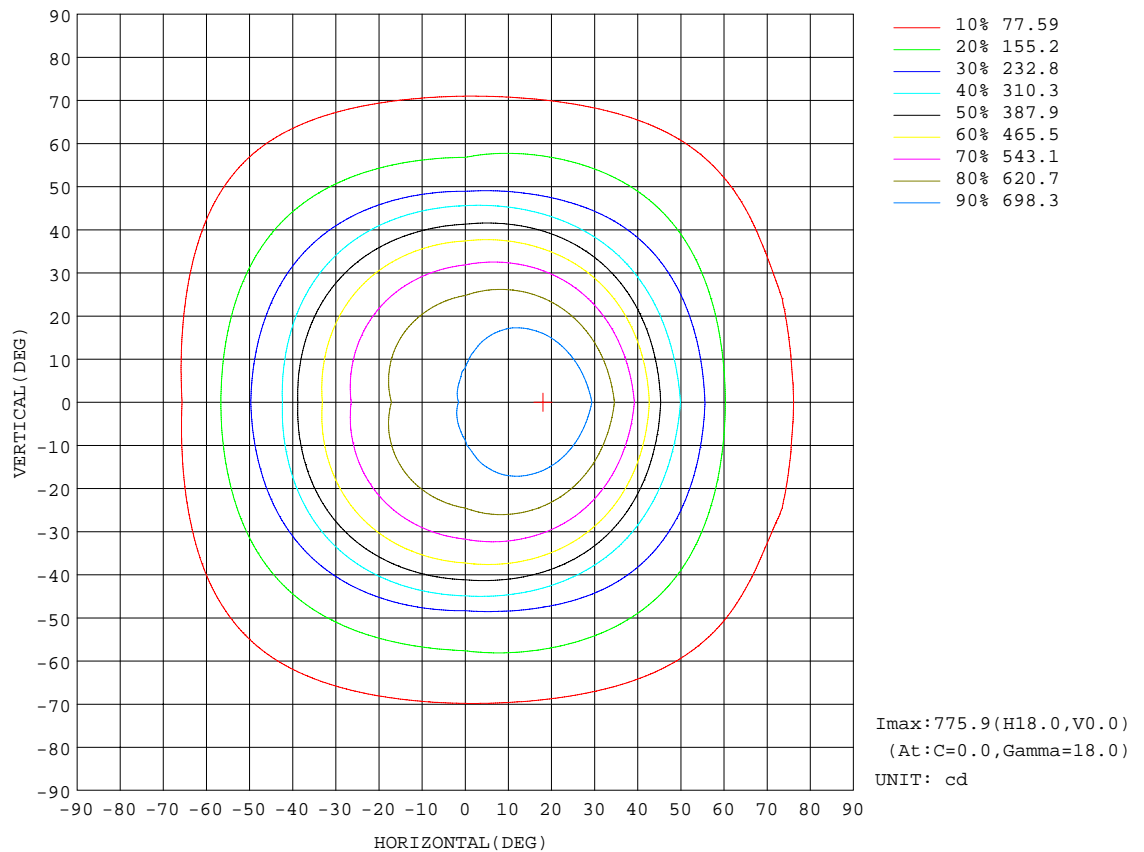
REFLECTANCE										
Ceiling	0.8	0.8	0.8	0.7	0.7	0.7	0.5	0.5	0.5	0
Walls	0.7	0.5	0.3	0.7	0.5	0.3	0.7	0.5	0.3	0
Working plane	0.2	0.2	0.2	0.2	0.2	0.2	0.2	0.2	0.2	0
ROOM INDEX	UTILIZATION FACTORS(PERCENT) $k(RI) \times RCR = 5$									
k = 0.60	66	56	49	65	55	49	64	55	49	44
0.80	75	65	59	74	65	59	73	64	58	52
1.00	83	73	67	82	73	67	80	74	66	60
1.25	89	80	74	88	80	74	85	78	73	67
1.50	93	85	79	92	84	79	89	83	78	71
2.00	99	92	86	97	91	86	94	89	84	77
2.50	102	96	90	100	94	90	97	92	88	80
3.00	105	99	94	103	98	93	99	95	91	83
4.00	108	103	99	106	102	98	102	98	95	87
5.00	110	106	103	108	104	101	104	101	98	89
ROOM INDEX	UF(total)									Direct
According to DIN EN 13032-2 2004			Suspended					SHRNOM = 1.25		

C Range: 0 - 360DEG  
C Interval: 90.0DEG  
Test Speed: HIGH  
Temperature:25.3DEG  
Operators:  
Test Date:2026-01-17

$\gamma$  Range: 0 - 90DEG  
 $\gamma$  Interval: 1.0DEG  
Test System:EVERFINE GO-2000A\_V1 SYSTEM V2.0.406.10  
Humidity:65.0%  
Test Distance:11.700m [K=1.0000]  
Remarks:

## ISOCANDELA DIAGRAM

Test:U:229.79V I:0.1300A P:28.361W PF:0.9496 Freq:49.99Hz Lamp Flux:1496.29x1 lm		
NAME:	TYPE:	WEIGHT:
SPEC.:	DIM.: 600*203*10	SERIAL No.:
MFR.:	SUR.:0.58*0.122	Shielding Angle:



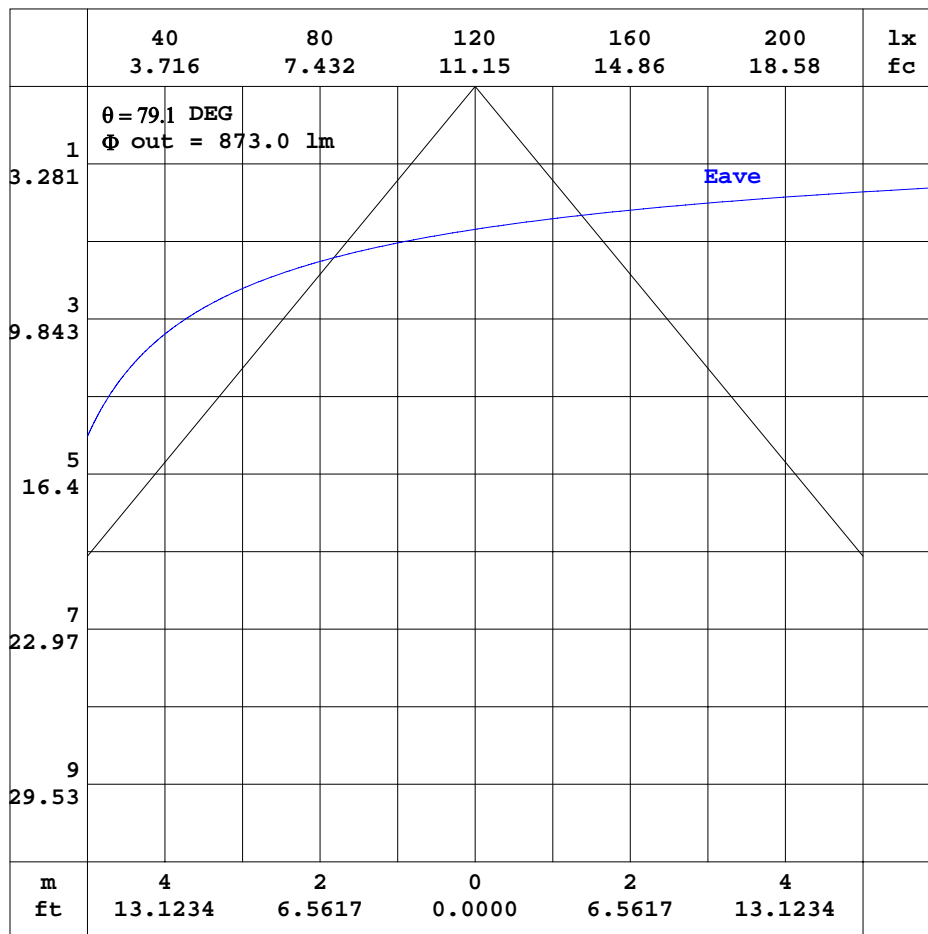
C Range: 0 - 360DEG  
C Interval: 90.0DEG  
Test Speed: HIGH  
Temperature:25.3DEG  
Operators:  
Test Date:2026-01-17

$\gamma$  Range: 0 - 90DEG  
 $\gamma$  Interval: 1.0DEG  
Test System:EVERFINE GO-2000A\_V1 SYSTEM V2.0.406.10  
Humidity:65.0%  
Test Distance:11.700m [K=1.0000]  
Remarks:



### AAI CURVES

Test:U:229.79V I:0.1300A P:28.361W PF:0.9496 Freq:49.99Hz Lamp Flux:1496.29x1 lm		
NAME:	TYPE:	WEIGHT:
SPEC.:	DIM.: 600*203*10	SERIAL No.:
MFR.:	SUR.:0.58*0.122	Shielding Angle:



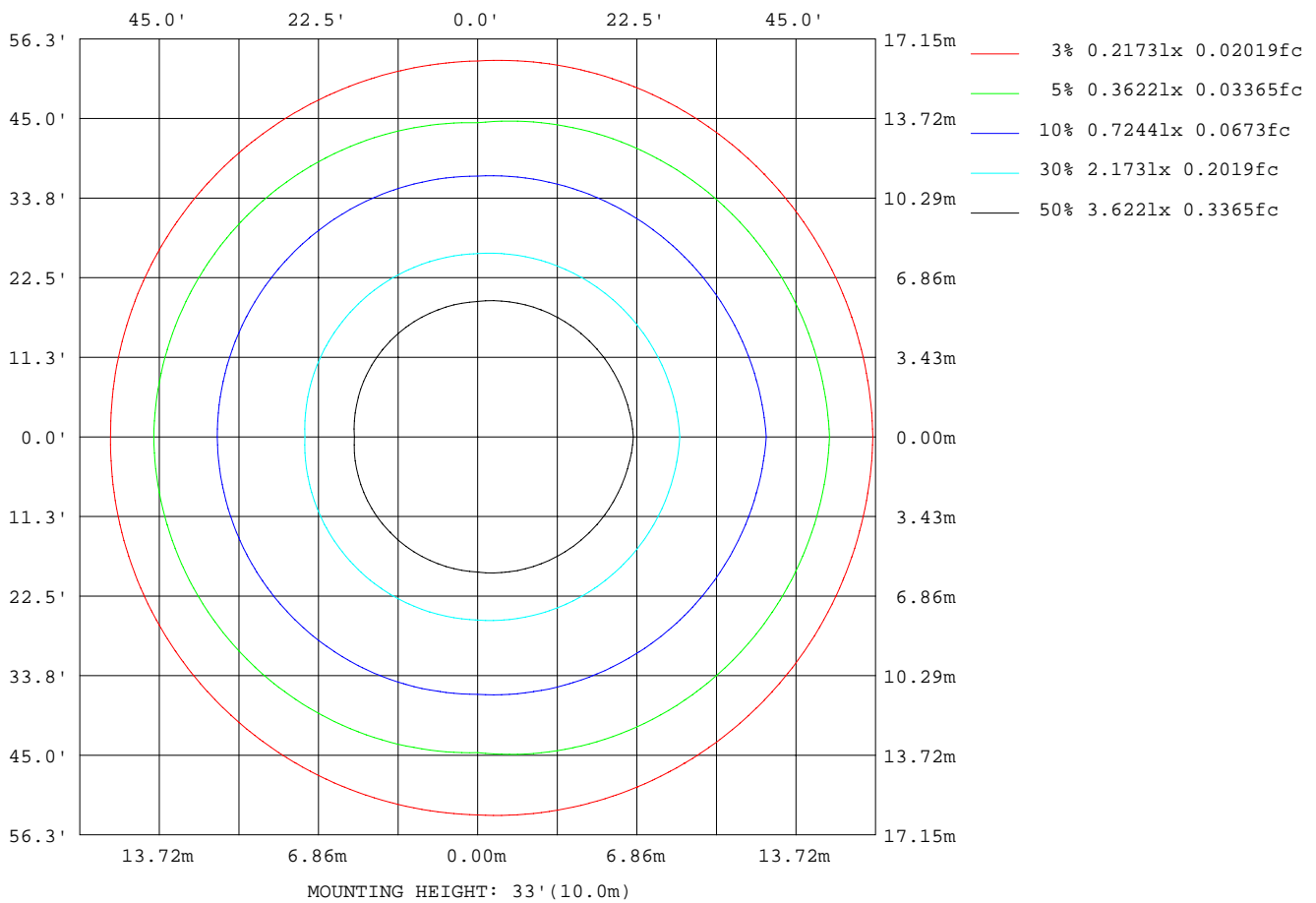
Note:The Curves indicate the illuminated area and the average illumination when the luminaire is at different distance.

C Range: 0 - 360DEG  
 C Interval: 90.0DEG  
 Test Speed: HIGH  
 Temperature:25.3DEG  
 Operators:  
 Test Date:2026-01-17

$\gamma$  Range: 0 - 90DEG  
 $\gamma$  Interval: 1.0DEG  
 Test System:EVERFINE GO-2000A\_V1 SYSTEM V2.0.406.10  
 Humidity:65.0%  
 Test Distance:11.700m [K=1.0000]  
 Remarks:

## ISOLUX DIAGRAM

Test:U:229.79V I:0.1300A P:28.361W PF:0.9496 Freq:49.99Hz Lamp Flux:1496.29x1 lm		
NAME:	TYPE:	WEIGHT:
SPEC.:	DIM.: 600*203*10	SERIAL No.:
MFR.:	SUR.:0.58*0.122	Shielding Angle:



C Range: 0 - 360DEG  
C Interval: 90.0DEG  
Test Speed: HIGH  
Temperature:25.3DEG  
Operators:  
Test Date:2026-01-17

$\gamma$  Range: 0 - 90DEG  
 $\gamma$  Interval: 1.0DEG  
Test System:EVERFINE GO-2000A\_V1 SYSTEM V2.0.406.10  
Humidity:65.0%  
Test Distance:11.700m [K=1.0000]  
Remarks:

## LED Avg.L Report

Test:U:229.79V I:0.1300A P:28.361W PF:0.9496 Freq:49.99Hz Lamp Flux:1496.29x1 lm		
NAME:	TYPE:	WEIGHT:
SPEC.:	DIM.: 600*203*10	SERIAL No.:
MFR.:	SUR.:0.58*0.122	Shielding Angle:

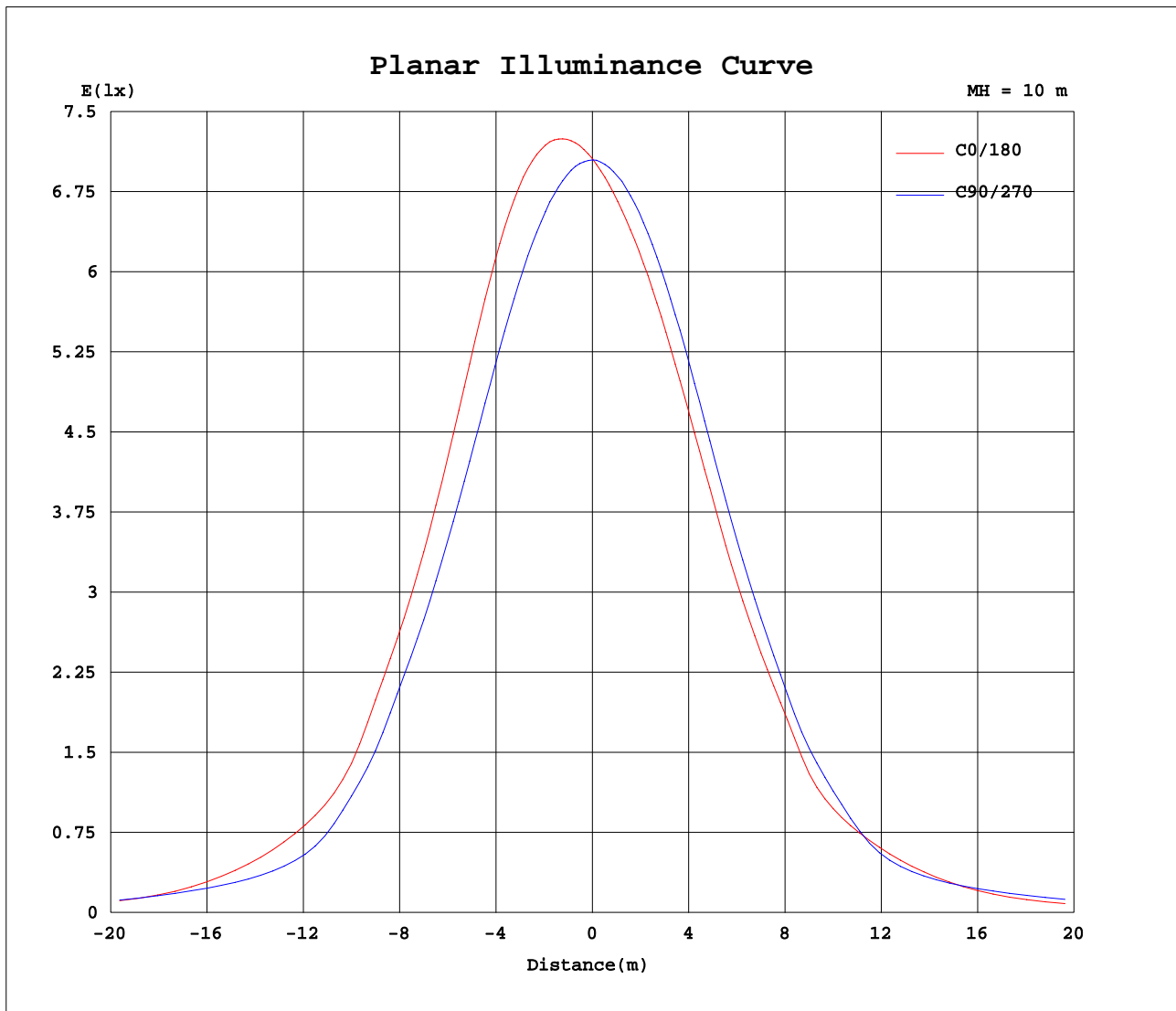
AvgL	cd/m2
L_0~180(65)av	3029
L_0~180(75)av	3943
L_0~180(85)av	4790
L_90~270(65)av	3878
L_90~270(75)av	3197
L_90~270(85)av	4318
L_45(65)av	3537
L_45(75)av	3453
L_45(85)av	4443

Standard: GB/T 29293-2012

C Range: 0 - 360DEG  
C Interval: 90.0DEG  
Test Speed: HIGH  
Temperature:25.3DEG  
Operators:  
Test Date:2026-01-17

γ Range: 0 - 90DEG  
γ Interval: 1.0DEG  
Test System:EVERFINE GO-2000A\_V1 SYSTEM V2.0.406.10  
Humidity:65.0%  
Test Distance:11.700m [K=1.0000]  
Remarks:

## Planar Illuminance Curve



C Range: 0 - 360DEG  
C Interval: 90.0DEG  
Test Speed: HIGH  
Temperature: 25.3DEG  
Operators:  
Test Date: 2026-01-17

$\gamma$  Range: 0 - 90DEG  
 $\gamma$  Interval: 1.0DEG  
Test System: EVERFINE GO-2000A\_V1 SYSTEM V2.0.406.10  
Humidity: 65.0%  
Test Distance: 11.700m [K=1.0000]  
Remarks:

```

γ Range: 0 - 90DEG
γ Interval: 1.0DEG
Test System:EVERFINE GO-2000A_V1 SYSTEM V2.0.406.10
Humidity:65.0%
Test Distance:11.700m [K=1.0000]
Remarks:

```